

Environment and Community Safety Overview and Scrutiny Committee
Performance Improvement Report Quarter 3 2008

CONTENTS

Definitions of Performance Rating

1.0 Local Area Agreement Indicators - Summary

1.1 Reducing crime and improving safety

1.1.1 Action Plans for those areas of concern

1.2 Strengthening communities & involving people

1.3 Promoting resource efficiency & enhancing the environment

1.4 Promoting sustainable transport

2.0 National Indicators and other measures

2.1 Waste, Recycling and Street Cleansing

2.2 Planning

2.3 Transport

3.0 The New Performance Management Framework - Summary

Definitions of performance rating

Direction of travel incorporates an assessment of both performance against target and progress against the milestones in the delivery plan as follows:

● GREEN	Performance is good
●/● AMBER/GREEN	Performance is off target but progress against delivery plan milestones is on track to deliver good performance
● AMBER	Performance is off target and progress against delivery plan milestones requires close monitoring
● RED	Performance is significantly off target
● GREY	No judgement possible (Targets may be missing or it is the baseline year for an indicator)

An indicator could be off target but if there is evidence the delivery of the planned actions will enable performance to reach the level targeted it will be colour coded AMBER/GREEN

1.0 Local Area Agreement (LAA) Indicators – Summary




This section summarises the key indicators chosen to be monitored through the LAA

1.1 Reducing crime & improving safety

LAA outcome	Baseline	08/09 target	Quarter 1 (Apr-June 08)	Quarter 2 (July-Sept 08)	Quarter 3 (Oct-Dec 08)	Direction of travel	Lead Directorate
<p>NI 17 Perceptions of anti-social behaviour</p> <p><i>Rationale – To measure perceptions of anti-social behaviour in the area. Anti-social behaviour is a priority for the Government and local authorities are a key partner in tackling it</i></p>	36% (City views proxy)	32.5%	Not available	Not available	Not available (awaiting Place Survey results)	● GREY	Environment
<p>NI 30 Re-offending rate of prolific and priority offenders</p> <p><i>Rationale – To monitor performance in reducing the level of offending by prolific and priority offenders</i></p>	285 convictions (83 people in cohort)	208 convictions (27% reduction)	269 convictions (12 months to June 08 - 6% reduction)	262 convictions (12 months to Sept 08 - 8.1% reduction)	Not available	● RED See action plan (section 1.1.1)	Environment
<p>NI 32 Repeat incidents of domestic violence</p> <p><i>Rationale – This indicator will be delayed until the support arrangements measured by it are</i></p>	New indicator	Baseline year	Not available	Not available	Not available	● GREY	Environment

LAA outcome	Baseline	08/09 target	Quarter 1 (Apr-June 08)	Quarter 2 (July-Sept 08)	Quarter 3 (Oct-Dec 08)	Direction of travel	Lead Directorate
<i>further rolled out across the country</i>							
<p>NI 38 Drug-related (Class A) offending rate</p> <p><i>Rationale – This indicator is still under development, once finalised it will measure performance tackling drug misuse and the contribution towards an overall reduction in crime and reoffending</i></p>	New indicator	Baseline year	Not available	Not available	Not available	● GREY	Environment
<p>NI 40 Drug users in effective treatment</p> <p><i>Rationale – To drive a reduction in the harm caused by the misuse of drugs</i></p>	1152	1164	Not available	981 (May 08)	1131 (up to Sept '08)	● GREEN	Environment
<p>NI 47 People killed or seriously injured in road traffic accidents</p> <p><i>Rationale – To reduce the number of people killed or seriously injured in road traffic accidents</i></p>	165	159 (-3.6%)	Not available	Not available	Not available until Apr 2009	● RED See action plan (section 1.1.1)	Environment/ ESFRS
<p>NI 111 First time entrants to the Youth Justice System</p> <p><i>Rationale – The number of young people who receive their first substantive outcome from the youth justice system. To measure and improve performance in preventing youth</i></p>	497 (PNC data - 2007/08)	472 (- 5%)	95	149	187 (up to Dec 08)	● GREEN	Youth Offending Team

LAA outcome	Baseline	08/09 target	Quarter 1 (Apr-June 08)	Quarter 2 (July-Sept 08)	Quarter 3 (Oct-Dec 08)	Direction of travel	Lead Directorate
<i>offending</i>							
<p>L 5 Specialist support to victims of a serious sexual offence (NI 26)</p> <p><i>Rationale – The survey method and questions are still under development. When in place it will measure the effectiveness in commissioning support services, raising awareness of services available in the community and encouraging victims to come forward</i></p>	New indicator	Baseline year	Not available	Not available	Not available	● GREY	Environment
<p>L 6 Assault with injury crime rate (NI 20)</p> <p><i>Rationale – To measure the rate of assault crimes, and act as a proxy measure for alcohol related violent crimes</i></p>	2,191	2,081 (-5%)	668 (June 08)	1048 (Sept 08)	1514 (Dec 08)	● GREEN	Environment
<p>L 7a Arson incidents (NI 33) – primary fires</p> <p><i>Rationale – To measure the levels of arson incidents, good performance would see a decrease</i></p>	246	221	54 (June 08)	103 (Sept 08)	149 (Dec 08)	● GREEN	ESFRS
<p>L 7b Arson incidents (NI 33) – secondary fires</p>	390	351	164 (June 08)	213 (Sept 08)	266 (Dec 08)	● AMBER See action plan	ESFRS

LAA outcome	Baseline	08/09 target	Quarter 1 (Apr-June 08)	Quarter 2 (July-Sept 08)	Quarter 3 (Oct-Dec 08)	Direction of travel	Lead Directorate
						(section 1.1.1)	
L 8 Number of police recorded LGBT hate crimes and incidents <i>Rationale – To achieve an increase in reports to police to reflect increased public confidence, community engagement and increased opportunities for reporting</i>	184	193 (+5%)	52	89 (Oct 08)	101 (Dec 08)	 AMBER See action plan (section 1.1.1)	Environment
L 9 Number of police recorded racist and religiously motivated crimes and incidents <i>Rationale – To see a reduction in the levels of incidents</i>	554	526 (-5%)	102	226 (Oct 08)	268 (Dec 08)	 GREEN	Environment
L 10 Number of police recorded total sexual offences <i>Rationale – To see an increase in the levels of reporting to reflect increase opportunities and community engagement</i>	283	297 (+5%)	77	201 (Oct 08)	280 (Dec 08)	 GREEN	Environment

1.1.1 Local Area Agreement Action Plans for those Areas of Concern

NI 30	Re-offending rate of prolific and priority offenders	Baseline	2008/09 target	Latest Result	Status
		285 convictions	208 convictions (27% reduction)	262 convictions (8.1% reduction)	● RED
Actions		Milestones	Progress	By when	Lead officer
Sustain delivery of the Priority & Prolific Offender Project against national good practice, incorporating work which: deters young first time offenders, prevents young people from becoming repeat offenders, provides prompt and effective investigation of adults and swift recall to prison upon re-offending. Seek to rehabilitate and resettle through improved status and personal		PPO Steering Group to reallocate resources in response to any feedback from operational managers around barriers to progress. (Indicator: % of PPOs with named keyworkers) Extend PPO Project to include all prolific offenders who commit crimes other than acquisitive crimes and establish delivery arrangements across CDRP partners .	Scheme now extended to include a wider group of priority and prolific offenders than the defined cohorts who were included within the original LPSA funded scheme. Savings within agreed budget for this year have been allocated to a Restorative Justice scheme aimed at reducing re-offending by young people who are already within the youth criminal justice system and to a rent in advance and deposit scheme for those adult offenders for whom homelessness upon release from prison is most likely to cause re-offending. Some resources also to fund communications work about successes in order to help reduce fear of crime and improve perceptions.	Quarterly	PPO Co-ordinator / C.I Ian Pollard, Nick Smart, Probation Nigel Andain, Youth Offending Team Mike Pattinson, CRI

21

<p>circumstances of offenders in the areas of housing, health (including drug treatment), education, training and employment</p>		<p>Important factors in reducing offending by PPOs relate to their having an assigned keyworker and them engaging in drug treatment where drug use is a motivator in their offending. In October there were 48 PPOs currently being worked with. 45 of these PPOs had a named keyworker assigned. Of these 48 PPOs, 41 were in need of drug treatment, 71% of whom were actually engaged in treatment</p>		
<p>Provide a full range of protective and preventative interventions to reduce risk factors of young people re-offending, specifically to those meeting ‘Deter’ criteria (as defined by the Youth Justice Board)</p>	<p>Include those meeting deter criteria in the monthly Management of Serious Harm (MoSH) meeting agenda</p> <p>Explore use of a risk matrix to identify additional support provided to Deter cohort</p> <p>Agree aftercare package with TYSS for high risk young people ending an order with the YOT</p> <p>Undertake evaluation of interventions through service user group</p> <p>Sustain delivery of Prevent and Deter</p>	<p>Given the development of the TYSS with its focus on crime prevention it has been agreed that the Prevent strand will take its referrals from the police via the new diversionary project (targeting pre-reprimands). The Deter strand (re-offending) will focus on those young people who are at high risk of re-offending via intensive casework and developing project work (arts and music) to better engage those young people</p> <p>A service user group has been created. It has met twice with up to six young people attending each meeting</p>	<p>31st Oct 08</p> <p>31st Oct 08</p> <p>30th Nov 08</p> <p>31st Dec 08</p> <p>Quarterly</p>	<p>YOT– Jim Park</p> <p>YOT – Nigel Andain</p> <p>YOT – Nigel Andain</p> <p>YOT – Jo Bates</p> <p>Gillian</p>

	initiatives within the YOT, Challenge & Support and Targeted Youth Support initiative across the City	Re-offending figures for the YOT are measured against a baseline for Jan to March 2005 where a 12 month overall rate of 38% was measured. For the first quarter of 2008/9 there is a reduction of two percentage points in the number from the cohort reoffending.		Cunliffe/Linda Beanlands CYPT and PCST
--	---	--	--	--

Remedial action notes: This indicator is showing an 8.1% reduction as opposed to the target of 14% (for the 12 months running up to September 08 - 15 more convictions than the target). As soon as this data was available it was discussed in detail at the multi-agency PPO steering group and steps put in place to redirect resources to bring about improvements in performance. This approach will come into effect during the rest of 2008/09 and into 2009/10 and will include increasing engagement with 'lower risk' as well as 'higher risk' PPOs and work with the Court system to explore ways to improve effectiveness.

23

NI 47	People killed or seriously injured in road traffic accidents	Baseline	2008/09 target	Latest Result	Status
		165	159 3.6% reduction	Not available until May 2009	● RED
Actions		Milestones	Progress	By when	Lead officer
Targeted programme of road safety engineering measures to address the		Ongoing development and delivery of individual casualty reduction schemes at 26 sites.	Current programme is ongoing. Changes in the methodology for prioritising casualty reduction sites to overcome difficulties	Apr 11	Road Safety Team

highest priority locations where significant numbers of collisions/casualties occur, to maximise reductions in the number and severity of people injured		encountered in addressing some of the 26 identified sites are currently being explored.		
Development of Speed Management Strategy	Subject to timescale to be agreed with partners in Sussex Safer Roads Partnership	Agreed a course of action with Sussex Police Traffic Management Office to develop SM Strategy.	To be confirmed	Road Safety Team Sussex Safer Roads Partnership
Review of speed limits	Completion of review and implementation of necessary changes.	Consultancy engaged to carry out review and prepare recommendations by March 2009.	Dec 11	Road Safety Team
Promotion of road safety campaigns and publicity	Participation/promotion dependent on various campaign dates	Promotional and publicity work is ongoing but has been at a minimal level due to staff vacancy. New officer appointed to take post in November 2008.	Apr 11	Road Safety Team
Undertake Road Safety education, with a particular focus on schools, including Bikeability Training and Child Pedestrian Training	To complete Bikeability training of all Year 5 and 6 pupils in LEA schools. Continuation of Child Pedestrian Training in schools (20 (1200 children) per year	The bikeability milestone, which must have been set by my predecessor, is, in my opinion, flawed. We may be able to offer bikeability training to all LEA schools but we cannot force reluctant schools to take up the offer.	Apr 10	Road Safety Team

		In 2007 child pedestrian training was delivered to 1297 children at 20 of the city's schools.		
Fair enforcement of road traffic law to ensure that all road users abide by regulations/legislation	Ongoing programme of Police enforcement initiatives		Apr 11	Inspector Phil Clarke - Sussex Police Road Policing Unit Hove

25

Remedial action notes: Whilst no data will be available until the end of the financial year, road safety is one of the four key themes of the current LTP and the road safety strategy is based on a three pronged approach – engineering, education and enforcement. We have developed a list of priority sites across the city that experiences a high number of accidents and this list forms the basis for engineering based road safety projects. Work is currently underway in North Street which, when complete, should significantly reduce accidents involving pedestrians (this area is top of the priority sites listing for accidents in the city). This project consists of a comprehensive package of engineering and supporting ‘softer’ measures that include an education and publicity strategy to increase and improve road safety awareness and reduce and prevent future casualties. In addition we have commissioned a citywide speed limit review for the entire A and B road network. This is expected to be completed by the end of this financial year with a view to extending the review to all class C roads. These projects, once implemented, should help the council to achieve the target of 3.6% reduction.

L7	Reducing arson incidents (NI 33) (Per 10,000 population)	Baseline	2008/09 target	Latest Result	Status
		Primary Fires	246	221	149 (Dec)
	Secondary Fires	390	351	266 (Dec)	● AMBER
Actions		Milestones	Progress	By when	Lead officer
Reduce the number of deliberate primary and secondary fires per 10,000 population to 8.79 in 2008/09, 7.92 in 2009/10 and 7.12 in 2010/11.		<p>Q1 - 41 primary fires (1.63 per 10,000 population) and 124 secondary fires (4.93 per 10,000 population)</p> <p>Q2 - 62 primary fires (2.47 per 10,000 population) and 89 secondary fires (3.54 per 10,000 population)</p> <p>Q3 - 46 primary fires (1.83 per 10,000 population) and 53 secondary fires (2.11 per 10,000 population).</p> <p>This gives a total for Q1, Q2 and Q3 of 149 primary fires (5.93 per 10,000 population) and 266 secondary fires (10.58 per 10,000 population).</p>	<p>We are on course to meet our target for primary fires but not quite on track for meeting the secondary fire target. . We are unsure at this stage if previous years trends will be followed with regard to reduction in secondary fires in the second half of the year so feel an amber flag is appropriate</p> <p>However, we will continue to work with relevant partners to continue to reduce the number of deliberate fires set across the city.</p>	End of March 09	Keith Ring, ESFRS
Work with the East Sussex Fire & Rescue Service Arson Reduction Team to proactively identify those		Schools offered a free joint arson audit inspection where a Crime Prevention Officer and Fire Officer attend together, a report is then	<p>These points are all part of a continual process.</p> <p>No incidents of arson in schools during the</p>	Ongoing	Keith Ring, ESFRS

<p>premises at risk and work with occupiers to reduce risk.</p>	<p>produced giving advice on arson prevention. Self-assessment forms are available here for schools to use to carry out their own audit.</p> <p>Crimestoppers Arson Alert boards are deployed at significant arson incidents, requesting information.</p> <p>The team support high visibility patrols in areas of increased risk.</p>	<p>current year.</p> <p>No real major response</p> <p>Early notification of patterns/trends to Police by FRS has prompted patrols in problems areas and this has reduced the numbers of secondary fires. Numbers of convictions not known.</p>		
<p>Improved, pro-active monitoring of cases of deliberate fire-setting.</p>	<p>Identification of trends and work with partners to reduce the incidents of deliberate fire setting.</p>	<p>Software improvements have enabled greater interrogation of data that permits the identification of patterns and trends of types of fires, premises and room involved, cause of fire and history of events.</p>	<p>Ongoing</p>	<p>Keith Ring, ESFRS</p>
<p>Work with the police to identify those locations that are susceptible to cases of deliberate fire setting and provide the police with timely data on incidents so that they can</p>	<p>Good working relationships with local police permits exchange of timely information on incidents and this leads to increased police activity in area.</p>	<p>Early notification of patterns/trends to Police by FRS has prompted patrols in problem areas and this has reduced the numbers of secondary fires.</p> <p>Numbers of convictions not known - mostly police caution given to offenders</p>	<p>Ongoing</p>	<p>Keith Ring, ESFRS</p>

target specific areas.				
------------------------	--	--	--	--

L8	Number of police recorded LGBT hate crimes and incidents	Baseline	2008/09 target	Latest Result	Status
		184	193(+5%)	101 (Dec)	● AMBER
Actions	Milestones	Progress		By when	Lead officer
Achieve a 5% increase in reports to police to reflect increased public confidence	Complete strategic assessment/analysis in order to clarify if reduced reporting is an accurate reflection of crime/incident levels	There has been continued engagement with the LGBT community, and feedback via the LGBT press regarding reporting and specific community safety concerns. There is continuing participation with the LGBT casework panel dealing with hate crime cases and LGBT housing and support working group around the issues of safety and the need to encourage reporting.		November 2008	Insp' David Derrick PCST & Anti Victimisation Initiative
Improve community engagement and increase opportunities for reporting	Develop networks and joint working arrangements with LGBT organisations in the City	There has been a third party reporting form developed which is currently being consulted on with community and partners, this has been developed for use by LGBT Switchboard who will use it to take third party reports . By utilizing a trusted LGBT community partner and publicising the service we hope this will		Ongoing	As above

		improve the trust and confidence in the criminal justice service and also improve access to reporting mechanisms.		
Respond to the needs of marginalized and vulnerable groups within the LGBT population	Ongoing work to target initiatives which are appropriate to circumstances of particular groups	<p>There is ongoing outreach being conducted with LGBT community groups who provide services to marginalised and excluded individuals and groups. This includes targeted work with: the Trans community; Mental Health service users and professionals; HIV+ men with engagement with the Terrance Higgins Trust; and users of public sex environments.</p> <p>PCST and Sussex Police have worked with the University of Brighton on the Count Me In 2 study of the city’s LGBT population. This has included both funding and participation on various groups conducting new analyses of the data specifically relating to the safety concerns of specific marginalised groups. This included the recently launched mental health report and the reports on bi and trans people which are soon to be launched. The data has been used to target preventative work, and input to assessment of trust and confidence/fear of crime; as well as providing an evidential base for developing 3rd party reporting initiatives.</p>		As above

<p>Sustain delivery of advice and support for victims/survivors ensuring effective communication of successful outcomes</p>	<p>Ongoing work by LBGT Liaison Officer and Community Safety Officer</p>	<p>There has been an ongoing supported victim-based casework offered to identified LGBT victims of hate crime the LGBT Liaison Officer. This has been supplemented by a new initiative by LGBT Switchboard which offers free and immediate counselling support to victims of LGBT hate crime. Analysis of data from this pilot project has shown a positive impact on attrition rates.</p>	<p>Ongoing</p>	<p>As above</p>
<p>Sustain LGBT anti-bullying and other work to address the safety needs of LGBT school age children and young people</p>	<p>Education and support programmes delivered within schools and through Targeted Youth Support (TYS) Initiative</p>	<p>Representatives from the criminal justice services continue to engage with the LGBT Anti-bullying Working Group and contribute to its action plan. This has recently included the publication and distribution of a resource to young people’s workers which assists them in challenging homophobic language. There has also been extended training to teachers and support staff</p>	<p>Ongoing</p>	<p>CYPT / Personal, Social, Healthy Schools and TYS Teams</p>

Remedial action notes: Although an increase target was set in view of the level of underreporting of LGBT motivated incidents apparent from the Count Me In 2 survey, recorded crimes and incidents has fallen steadily during the year. Work in 2008/09 has included the planning of courses to begin in February 2009 targeted at marginalised LGBT groups (including LGBT youth, HIV+ men, Bi, Trans and those with mental health needs) and the development of 3rd party reporting forms. These and other activities should result in increased rates of reporting to the police

1.2 Strengthening communities and involving people

LAA outcome	Baseline	Target 08/09	Q1 and Q2 (Apr-Sept 08)	Quarter 3 (Oct-Dec 08)	Direction of travel	Lead Directorate
L 18 Adult participation in sport (NI 8) <i>Rationale – Measures the percentage of the adult population participating in sport or active recreation for at least 30 minutes on 3 days per week</i>	25.1% (Active People Survey 05/06)	To be set at review in 2009	Not available	22.2% (Active People Survey 2 07/ 08) 08/09 result will be released in Nov 09	● AMBER (Statistically no significant change from baseline)	Environment

Progress

A range of participatory sports events e.g. Take Part festival of sport, Active for Life sessions, Health Living Day, Under 21 World Volleyball Championships and Get Moving (mental health) day have been held in order to encourage participation in sporting activities.

1.3 Promoting resource efficiency & enhancing the environment

LAA outcome	Baseline	Target 08/09	Q1 and Q2 (Apr-Sept 08)	Quarter 3 (Oct-Dec 08)	Direction of travel	Lead Directorate
NI 195 (c) Improved street and environmental cleanliness - levels of graffiti <i>Rationale – To reduce unacceptable levels of graffiti as part of the Governments ‘Cleaner Safer Greener Communities’ Work.</i>	9%	8%	Q1 - 4% Q2 - 5%	5%	● GREEN	Environment

Progress

There has been increased community involvement and partnership working to clear areas and enforcement against criminal damage. Good progress with adopt-a-box scheme with 57 adoptions so far. Target of 8% is being exceeded by 5% unsatisfactory streets (lower percentage highlights good performance).

1.4 Promoting sustainable transport

LAA outcome	Baseline	Target 08/09	Latest result	Direction of travel	Lead Directorate
NI 167 Congestion – average journey time per mile during the morning peak <i>Rationale – To monitor the level of congestion over time to give an indication of how well the road network is managed, and the effectiveness of any measures taken to cut congestion</i>	3 min per mile	3 min per mile	Not available until end of year	● GREY	Environment
NI 175 Access to services and facilities by public transport, walking and cycling <i>Rationale – To foster social inclusion by ensuring access to services by non-private modes of transport such as bus travel, walking and cycling. It aims to ensure that all households have access to frontline healthcare services within 30 minutes by public transport</i>	91%	92%	Not available until end of year	● GREY	Environment

33

Progress

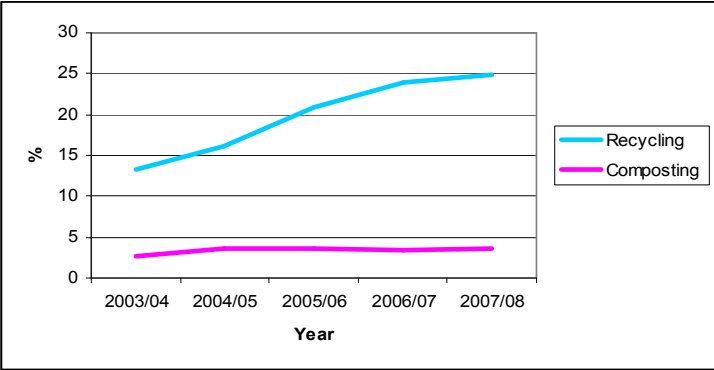
- NI 167 – this is a completely new indicator and the target is based on there being no increase in the average morning peak hour journey time on 5 key strategic routes entering the city centre. Latest results are not available until 2009.
- NI 175 – This national indicator supersedes ltp1 and is a stretched target that now seeks to increase the proportion of the population that are within 10 minutes of a doctors surgery (using public transport and walking). Data is not yet available to monitor the first year’s progress.

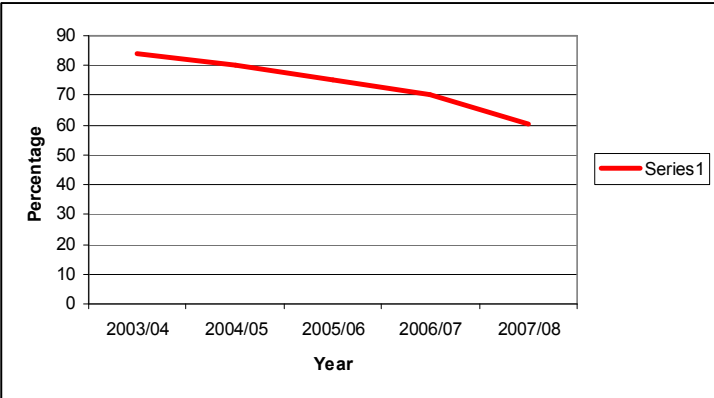
2.0 National Indicators (by subject)

This section provides an overview of the national indicators for which the Environment Directorate and the associated partnerships are responsible for. The National Indicator Set was first introduced in April 2008 (replacing BVPIs) and runs alongside the financial year (ends 31 March). This year is subject to transitional arrangements and in many places there are gaps in data, most of the indicators are reported on an annual basis and will be available after March 2009. Where possible an indication of direction of travel has been given, although because there are no historical data for the NIS, direction has been drawn from some of the old BVPIs. This section will be developed over-time and will become more comprehensive.

2.1 Waste, Recycling and Street Cleanliness

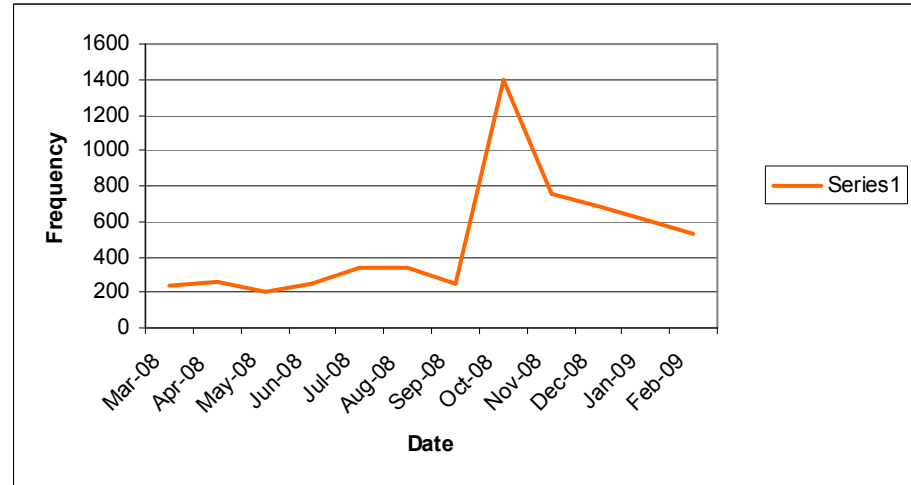
	National Indicator	Latest result	Comments
NI 191	Kg of Residual household waste produced per household	462 kg/hh (April 08-Dec 08) <u>Note:</u> Data up to Dec 08 so not yet a full year (full year ending March 09)	<ul style="list-style-type: none"> This is the first year of reporting kg of waste collected per household. This indicator is reported on an annual basis - we have data provided on a monthly basis.
NI 192	Percentage of household waste sent for reuse, recycling and composting	28.8% (April 08-Dec 08) <u>Note:</u> Data up to Dec 08 so not yet a full	<ul style="list-style-type: none"> This is the first year of reporting NI 192. This indicator is reported on an annual basis - we have data provided on a monthly basis to give an indication of direction. As a proxy – The graph below presents trends of recycling and composting since 2003 (BVPI 82 a&b). Levels of recycling and composting have been increasing

		<p>year (full year ending March 09)</p>	<p>year-on-year since 2003.</p>  <table border="1"> <caption>Recycling and Composting Trends (2003/04 - 2007/08)</caption> <thead> <tr> <th>Year</th> <th>Recycling (%)</th> <th>Composting (%)</th> </tr> </thead> <tbody> <tr> <td>2003/04</td> <td>13</td> <td>3</td> </tr> <tr> <td>2004/05</td> <td>16</td> <td>4</td> </tr> <tr> <td>2005/06</td> <td>21</td> <td>4</td> </tr> <tr> <td>2006/07</td> <td>24</td> <td>3.5</td> </tr> <tr> <td>2007/08</td> <td>25</td> <td>3.5</td> </tr> </tbody> </table> <ul style="list-style-type: none"> • Good performance would see an increase since 07/08 result of 28.4% - we are at the same level at the moment. 	Year	Recycling (%)	Composting (%)	2003/04	13	3	2004/05	16	4	2005/06	21	4	2006/07	24	3.5	2007/08	25	3.5
Year	Recycling (%)	Composting (%)																			
2003/04	13	3																			
2004/05	16	4																			
2005/06	21	4																			
2006/07	24	3.5																			
2007/08	25	3.5																			
<p>NI 193</p>	<p>Percentage of municipal waste landfilled</p>	<p>50.8% (April 08-Dec 08)</p> <p><u>Note:</u> Data up to Dec 08 so not yet a full year (full year ending March 09)</p>	<ul style="list-style-type: none"> • This indicator is reported on an annual basis - we have data provided on a monthly basis to give an indication of direction. • The graph below presents trends in the percentage of household waste sent to landfill since 2003 (BVPI 82d). Waste to landfill has been decreasing since 2003, due to increased diversion through recycling, composting and energy from waste. 																		

			 <ul style="list-style-type: none"> The lower the percentage, the better. In 07/08 waste to landfill was at 60%.
<p>NI 195</p>	<p>The percentage of relevant land and highway that is assessed as having deposits of litter, detritus, graffiti and fly-posting that fall below an acceptable level.</p> <p>A – Improved street cleanliness- litter</p> <p>B - Improved street cleanliness- detritus</p> <p>C – Improved street cleanliness- Graffiti</p> <p>D - Improved street cleanliness- fly-posting</p>	<p>(Sept 08-Dec 08)</p> <p>5%</p> <p>13%</p> <p>5%</p> <p>5%</p>	<ul style="list-style-type: none"> This is the first year of reporting NI 195. This indicator is reported on an annual basis - we have data provided on a 3 monthly basis to give an indication of direction. Good performance is recognised by lower percentage scores. The levels of unacceptable highway cleanliness is decreasing, this is especially true for levels of graffiti in the city.

<p>NI 196</p>	<p>Improved street cleanliness (Fly-tipping)</p>	<p>Figure available at the end of the year (March 09)</p>	<ul style="list-style-type: none"> This is the first year of reporting NI 196 and it is an annual indicator that will be available at the end of the financial year. 																										
<p>Number of missed recycling collections - monthly</p>		<p>588 (in Feb 09)</p>	<ul style="list-style-type: none"> This is not a statutory indicator but is tracked at the request of Environment and Community Safety Overview and Scrutiny Committee. The graph below shows trends in the number of missed recycling collections from March 08 to Feb 09 <div data-bbox="1034 545 1935 1034" data-label="Figure"> <table border="1"> <caption>Frequency of missed recycling collections</caption> <thead> <tr> <th>Date</th> <th>Frequency</th> </tr> </thead> <tbody> <tr><td>Mar-08</td><td>220</td></tr> <tr><td>Apr-08</td><td>330</td></tr> <tr><td>May-08</td><td>160</td></tr> <tr><td>Jun-08</td><td>140</td></tr> <tr><td>Jul-08</td><td>180</td></tr> <tr><td>Aug-08</td><td>140</td></tr> <tr><td>Sep-08</td><td>120</td></tr> <tr><td>Oct-08</td><td>150</td></tr> <tr><td>Nov-08</td><td>120</td></tr> <tr><td>Dec-08</td><td>160</td></tr> <tr><td>Jan-09</td><td>280</td></tr> <tr><td>Feb-09</td><td>588</td></tr> </tbody> </table> </div> <ul style="list-style-type: none"> Recycling rounds were restructured in February 2009; it is clear from the graph above that the number of missed recycling collections increased in line with the restructure. 	Date	Frequency	Mar-08	220	Apr-08	330	May-08	160	Jun-08	140	Jul-08	180	Aug-08	140	Sep-08	120	Oct-08	150	Nov-08	120	Dec-08	160	Jan-09	280	Feb-09	588
Date	Frequency																												
Mar-08	220																												
Apr-08	330																												
May-08	160																												
Jun-08	140																												
Jul-08	180																												
Aug-08	140																												
Sep-08	120																												
Oct-08	150																												
Nov-08	120																												
Dec-08	160																												
Jan-09	280																												
Feb-09	588																												
<p>Number of missed refuse collections - monthly</p>		<p>535 (in Feb 09)</p>	<ul style="list-style-type: none"> This is not a statutory indicator but is tracked at the request of Environment and Community Safety Overview and Scrutiny Committee. The graph below shows trends in the number of missed refuse collections from 																										

March 08 to Feb 09



- It is clear from the graph above that the number of missed refuse collections increased during the restructure of rounds (October 08) and has been decreasing since.

2.2 Planning

	National Indicator	Latest result	Direction of travel
NI 157 a	Processing of planning applications – % major applications determined within 13 weeks	80% (Apr-Dec 08)	<ul style="list-style-type: none"> National target – 60%
NI 157 b	Processing of planning applications – % minor applications determined within 8 weeks	43.2% (Apr-Dec 08)	<ul style="list-style-type: none"> National target – 65%
NI 157 c	Processing of planning applications – % other applications determined within 8 weeks	58.7% (Apr-Dec 08)	<ul style="list-style-type: none"> National target – 80%

2.3 Transport and Highways

	National Indicator	Latest result	Direction of travel
NI 48	Children killed and seriously injured in road traffic accidents	Figure available March 09	<ul style="list-style-type: none"> This was previously collected as BVPI 99b, in 2007/08 there were 17 children killed and seriously injured in road traffic accidents, the target for 07/08 was 14.

NI 168	Principal roads where maintenance should be considered	Figure available March 09	<ul style="list-style-type: none"> In previous years this information was collected through the old BVPI 223. Performance at the end of 07/08 was at 11% of principal roads where maintenance should be considered. This is not comparable to previous years due to a change in methodology.
NI 169	Non-principal roads where maintenance should be considered	Figure available March 09	<ul style="list-style-type: none"> In previous years this information was collected through the old BVPI 224a. Performance at the end of 07/08 was reported as 17% of non-principal roads where maintenance should be considered. Due to a change in the methodology this figure was amended to 8% and is therefore not comparable to previous years.
NI 177	Local bus and light rail passenger journeys originating in the authority area	Figure available April 2009	<ul style="list-style-type: none"> Before the introduction of the National Indicator Set this indicator was reported under BVPI 102 – generally performance is good and in 07/08 exceeded the target.
NI 178	Bus services running on time	Figure available April 2009	<ul style="list-style-type: none"> This is a new indicator and 08/09 is a baseline year.

2.4 Crime and community safety

	National Indicator	Latest result	Direction of travel
NI 15	Most serious violent crimes per 1000 of the population	0.5 (120 in total up to January 09)	<ul style="list-style-type: none"> 08/09 target set is – 124 (at the end of March 08)
NI 16	Serious acquisitive crime	15.1	<ul style="list-style-type: none"> There are no targets set for this indicator

	rate per 1000 of the population	(3825 in total up to January 09)	
NI 18	Rate of proven re-offending by adults under probation supervision	No data available yet	<ul style="list-style-type: none"> • Awaiting data
NI 21	Dealing with local concerns about ASB and crime issues by the local authority and police	Data from Place Survey not yet available	<ul style="list-style-type: none"> • Data relating to this indicator will be taken from the recent Place Survey (satisfaction survey) that took place in 2008.
NI 22	Perceptions of parents taking responsibility for the behaviour of their children in their area	Data from Place Survey not yet available	<ul style="list-style-type: none"> • See above
NI 23	Perceptions that people in the area treat one another with respect and consideration	Data from Place Survey not yet available	<ul style="list-style-type: none"> • See above
NI 27	Understanding of local concerns about ASB and crime issues by the police and the local authority	Data from Place Survey not yet available	<ul style="list-style-type: none"> • See above
NI 28	Serious knife crime rate per 1000 population	No data available yet	<ul style="list-style-type: none"> • Awaiting data
NI 29	Serious number of gun crimes per 1000 population	No data available yet	<ul style="list-style-type: none"> • Awaiting data
NI 34	Number of domestic homicides per 1000	No data available yet	<ul style="list-style-type: none"> • Awaiting data

	population		
NI 41	Perceptions of drunk or rowdy behaviour as a problem	Data from Place Survey not yet available	<ul style="list-style-type: none"> Data relating to this indicator will be taken from the recent Place Survey (satisfaction survey) that took place in 2008.
NI 42	Perceptions of drug use or drug dealing as a problem	Data from Place Survey not yet available	<ul style="list-style-type: none"> Data relating to this indicator will be taken from the recent Place Survey (satisfaction survey) that took place in 2008.

2.5 Enforcement

	National Indicator	Latest result	Direction of travel
NI 182	Satisfaction of businesses with local authority regulation services	Figure available Apr 2009	<ul style="list-style-type: none"> Satisfaction is monitored as standard practice within Environmental Health and Trading Standards – information for this indicator will be available April 09. The methodology for calculating this indicator required the satisfaction surveys used to be reworded – this has been implemented. It also requires the use of a sample – at present 100% of customers are surveyed.
NI 183	Impact of local authority trading standards services on the fair trading environment	Figure available Apr 2009	<ul style="list-style-type: none"> This is a new indicator

NI 184	The percentage of food establishments in the area which are broadly compliant with food hygiene law	Figure available Apr 2009	<ul style="list-style-type: none"> This is a new indicator
NI 190	Achievements in meeting standards for the control of animal health	Figure available Apr 2010	<ul style="list-style-type: none"> This indicator was deferred in 08/09 and will be live from April 2009, for reporting in March 2010

2.6 Parks

	National Indicator	Latest result	Direction of travel
NI 197	Improved local biodiversity – proportion of local sites where positive conservation management has been or is being implemented	Not available	<ul style="list-style-type: none"> The methodology for this indicator requires the set up of Local Sites, a Local Sites Partnership and the development of management action plans for each local site

3.0 The Performance Management Framework – Comprehensive Area Assessment, Local Area Agreement, National Indicator Set

From April 2009 a new assessment framework for councils and their partners will come into effect. The Comprehensive Area Assessment (CAA) replaces the Comprehensive Performance Assessment (CPA), and will bring together the work of seven inspectorates to provide an overview of how successfully local organisations are working together to deliver improvement against local priorities.

CAA represents a fundamental change in the way the council and its partners are assessed moving away from solely focusing on the past performance of the council towards a forward looking assessment of our prospects for future success against its objectives. It comprises of two main elements; the Area Assessment and the Organisational Assessment.

The Area Assessment is a qualitative assessment of prospects for future improvement and will focus on, but not be constrained by, a review of progress with the Local Area Agreement (LAA).

An Organisational Assessment will be conducted for each of the four main organisations in the area: the council, the police, the Primary Care Trust and the Fire and Rescue Service. The council's assessment will cover the following areas: managing finances, governing the business, managing resources and managing performance.

The managing performance theme will look at how effective the organisation is at:

- identifying and delivering priority services, outcomes and improvements
- providing the leadership, capacity and capability it needs to deliver future improvements
- contributing to improving wider community outcomes, including those set out in the LAA
- tackling inequality and improving outcomes for people in vulnerable circumstances

Performance Report – Quarter 3

The new local performance framework was set out in the Local Government White Paper *Strong and Prosperous Communities* in 2006. The two key elements of the framework are the LAA and the National Indicator Set (NIS).

The LAA forms the heart of the new performance framework. It sets out the agreement between central government and local authorities and their partners to improve services and the quality of life in a place. Brighton and Hove's LAA (2008-2011) comprises 35 negotiated targets, 16 statutory education and early years targets and a set of local indicators. The LAA Delivery Plan sets out a detailed improvement action plan for each indicator and identifies lead responsibilities and time-scales. The Local Strategic Partnership monitors the LAA Delivery Plan six monthly.

The National Indicator Set (NIS) was published as part of the Comprehensive Spending Review 2007. This is a set of 198 outcome focused indicators that replace Best Value Performance Indicators (BVPIs). The NIS includes indicators for which partner organisations have lead responsibility such as mortality and crime rates. Whilst all target commitments are contained in the LAA, outcomes across the NIS are expected to improve.

The Corporate Plan 2008-2011 was developed alongside the LAA and sets out the priorities for the council. It uses measures drawn from the NIS, where appropriate, to track progress.

